

St Joseph's Catholic Primary—Community Garden

Dear Parents and Friends,

Welcome to our first Community Garden newsletter! We'd like to share with you our ideas, progress photos and planned activities within the garden as well as letting you know how parents, carers and friends can get involved and help to provide the skills we need to complete the project.

You may already know that our school has a wonderful piece of land with a large pond area—brimming with wildlife. We want to enhance this space to make a fully inclusive community garden in which our children can spend quality time studying nature, enjoying art, learning about the environment and planting and harvesting fruit and vegetables. In addition to this we are committed to make this space accessible to our neighbours at Deneview Care Home and our Community Centre users, along with our very own families and friends. The garden will incorporate many features; our pond will be cleaned and cleared attracting even more species to thrive, a bird hide for our children to watch wildlife in action, a viewing platform for the pond and features such as bat boxes, hedgehog huts, vegetable and fruit beds and much more.

We'd love your support to enhance the lives of every garden visitor, please read on to see how you can get involved!

Paul Craig

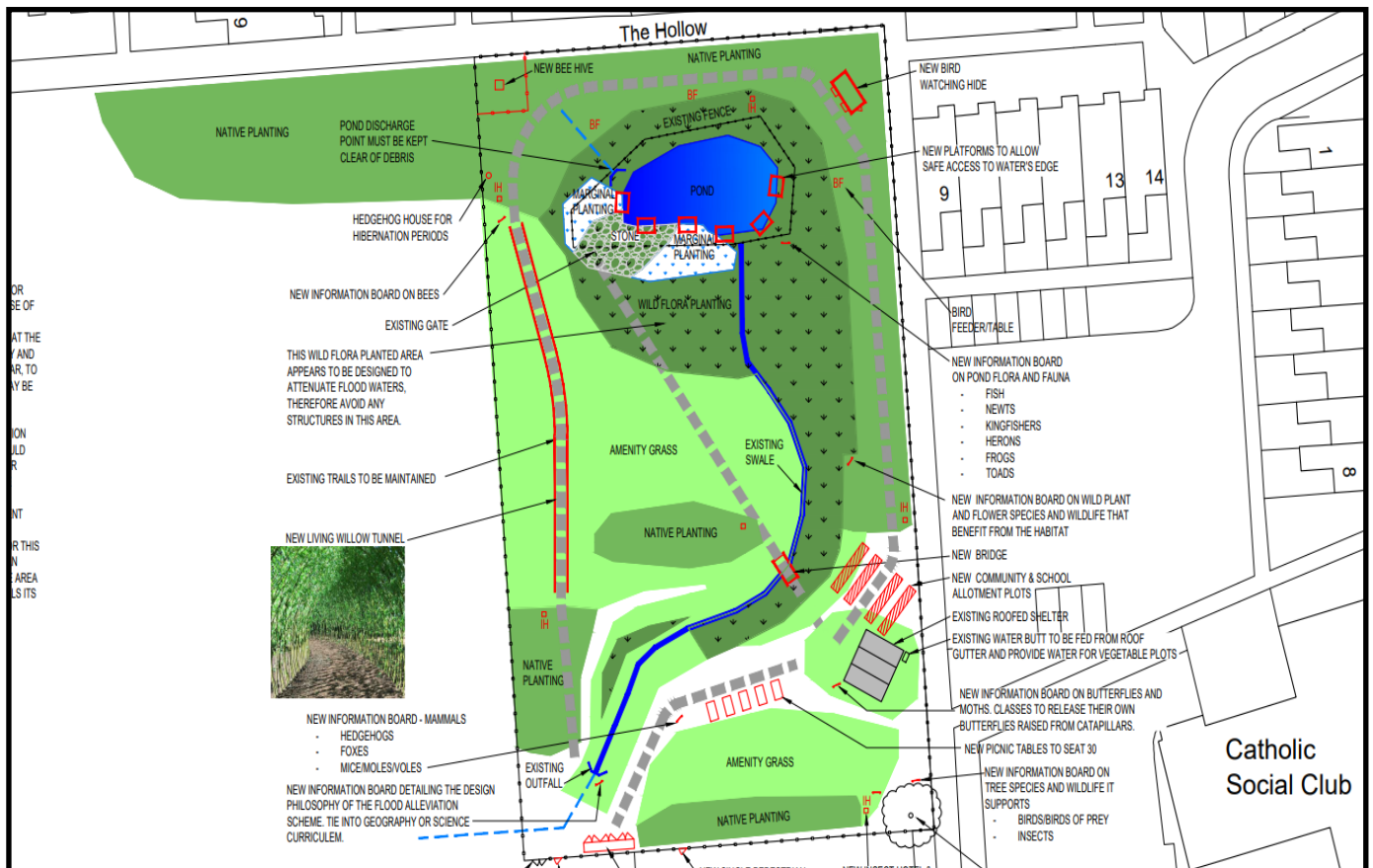
Headteacher

February 2022

Phase 1.

Successful applications to the National Lottery, Local Nature Grants, and the Linnean Society meant that our long awaited idea to create a wonderful Community Garden can now develop.

Working with an architect from our loyal supporters, Aspen Waterman Civil Engineers, we were able to create a detailed plan and drawings of what our Community Garden would look like and how it could best attract wildlife, protect the environment and support our children's education and our users needs. The details and features are really exciting and will provide so much opportunity for all of our visitors. Please take a look at our plan below.



April 2022

Phase 2.

We are extremely lucky to have a well established pond on site—however it is VERY overgrown with reeds and rushes. Before any clearing activity could be carried out ,it was vital that we engaged a professional ecologist to study our ponds ecosystem and confirm that no endangered species are present—we are delighted to report that, during the Easter break we were given the go ahead, although not until September so as not to disturb the breeding season of the resident amphibians!

Our friends at Sir Robert McAlpine were very busy as we were enjoying our Easter eggs—during the second week of the holidays their workforce came onsite with their heavy machinery to clear space, move earth and create the foundations for the new constructions in our garden. We can't thank them enough for their generous support!

May 2022

Phase 3.

Our next step is to begin constructing our features.... bird hide, seating areas, Bat Boxes and Hedgehog Houses and this is where you could help!!! If you have any time to spare or skills which could help us with construction, then we'd love to hear from you. You may be a professional joiner or just good at building flat pack furniture—we'd be grateful for as many hands on deck as possible. Please contact the office if you can spare an hour or two.



We'd also love to hear from any keen gardeners—parents, carers, grandparents or friends, who'd be willing to help us with planting or maintenance.

Watch out for further news and volunteering events to get involved in!

With special thanks to:

The National Lottery

Linnean Society

The Mercy Hub

Waterman Aspen

Sir Robert McAlpine